

# Liverpool Lime Street

Client: English Partnerships/Glenn Howells Architects  
Completed Spring 2010

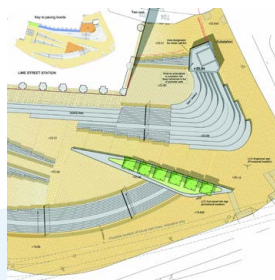
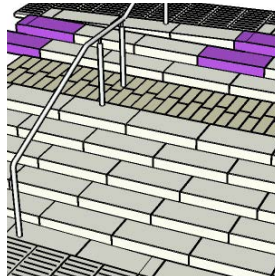


Liverpool Lime Street Station is a Victorian Grade II listed building situated within the Liverpool World Heritage Site. Moore Environment were commissioned by Glenn Howells Architects to assist in the production of construction details and specification for a new area of public realm at this historic gateway to the city.



*'creating the right experience for visitors arriving and departing the city'*

Eliot Lewis-Ward, Area director for Homes and Communities Agency



The scheme involved a complex design of gently graded ramps, integrated with tapering and sweeping curved steps and terraced seating steps, to deal with the significant level changes across the site. Materials used included York stone and Granite to complement the area's historic status adjacent to St. George's plateau.

Views of the fine Victorian architecture of the station are now opened up and the terraces offer fantastic views of Liverpool's skyline together with a sunny aspect for relaxation. Inclusion of artistic detailing, in the steps and paving, enhance the finished look of the station entrance and provide an additional link to Liverpool's heritage.

*'spaces create ease of movement, allowing for the natural ebb and flow of inward and outward commuter travel patterns.'*

Glenn Howells, Horticulture Week



# Technical Summary



**Location:** Liverpool  
**Type of scheme/site and size:** Public Realm  
**Lead landscape architect:** Glenn Howells  
**Outline brief:** Moore Environment worked with Glenn Howells to produce detailed construction drawings and specification for complex public realm to the front of Lime Street station.

**Contract value:** £ 4.2 million  
**Completion date:** Spring 2010

**Project team:** Liverpool Vision, HCA, Liverpool City Council, Network Rail  
**Our Client:** English Partnerships/ Glenn Howells

**Planning authority:** Liverpool City Council  
**Contact details:** Liverpool City Council, Municipal Building, Dale St, Liverpool, L2 2DH  
**Website:** [www.liverpool.gov.uk/](http://www.liverpool.gov.uk/)

**Materials:**

- Linear Stainless steel slot drainage channels
- Bespoke brushed stainless steel handrails
- Bespoke Granite forming stepped seating
- Spaces paved in York stone
- Granite stone steps

**Contractors:**

- Balfour Beatty Civil Engineering (main contractor)
- T&T Groundworks (paving)
- Stone Central (walling)

**Suppliers:**

- Marshalls